

東京

作詞 及川眠子 作曲 川上明彦 歌 やしきたかじん

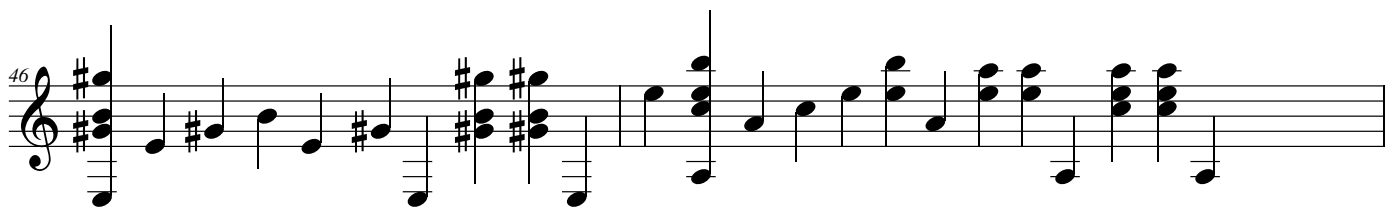
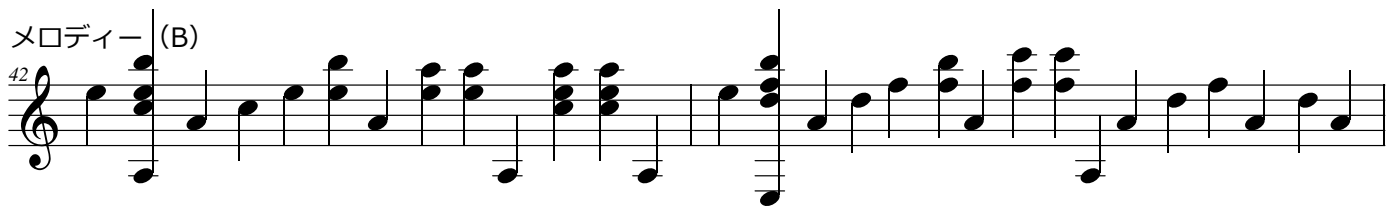
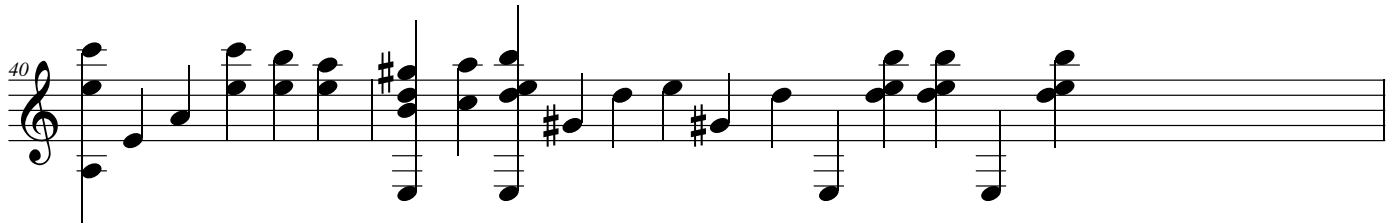
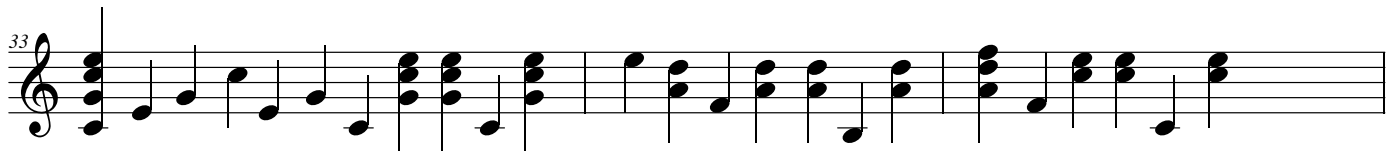
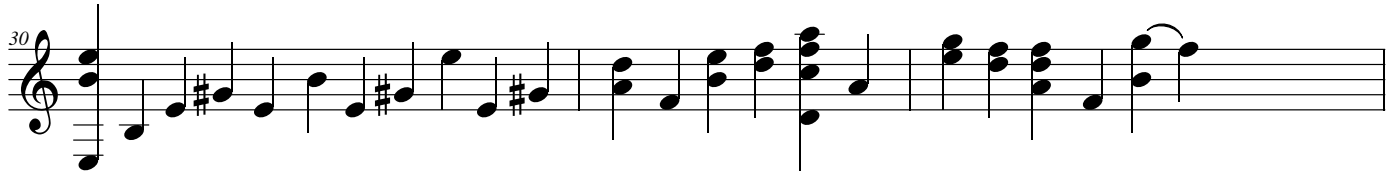
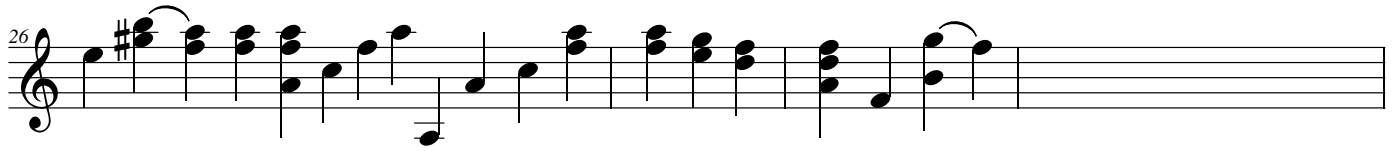
arrange 飯村茂樹

イントロ

The introduction consists of four staves of music in 4/4 time. The first staff shows a melodic line starting on a middle C and moving stepwise up to a G4, with a key signature change to one sharp (F#) at the end. The second, third, and fourth staves provide a harmonic accompaniment using chords and moving bass lines.

メロディー (A)

The melody (A) section consists of three staves of music. The first staff begins at measure 16 and features a series of chords and a melodic line. The second and third staves continue the accompaniment and melody, with measure numbers 19 and 23 indicated at the start of their respective staves.



48

51

メロディー (B) を繰り返す

エンディング

53

イントロ最後の1小節を残して弾く