

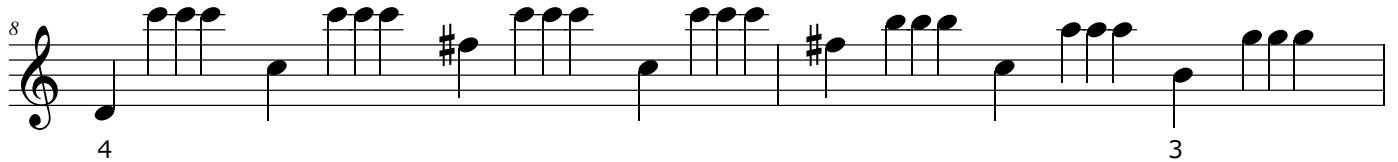
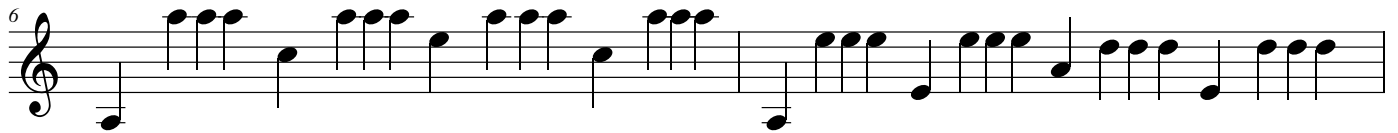
北の国から

作曲：さだまさし
イントロ

arrange : 飯村茂樹



メロディー-A



16

5

19

20

3

4

4

3

22

メロディー-A2回目・ここからメロディー-Bへ

24

メロディー-Aに戻る

25

メロディー-B

3

26

3

2

6

27

2

6

4

3

28

5 3 2

29

2

30

3 3 3 3

31

6 3 2 3

32

2 6

33

4 3 2

34

35

3

36 メロディーAに戻る

5 4

This musical staff shows measure 36. It begins with a treble clef and a key signature of one sharp (F#). The melody consists of quarter notes: G4, A4, B4, C5, D5, E5, F#5, G5, A5, B5, C6, D6, E6, F#6, G6, A6, B6, C7. There are two sharp signs (#) placed below the staff, one under the F#5 note and another under the F#6 note. The measure number '36' is at the top left, and the numbers '5' and '4' are positioned below the first and fourth notes respectively.

37 エンディング

This musical staff shows measure 37. It begins with a treble clef and a key signature of one sharp (F#). The melody consists of quarter notes: G4, A4, B4, C5, D5, E5, F#5, G5, A5, B5, C6, D6, E6, F#6, G6, A6, B6, C7. The measure number '37' is at the top left, and the text 'エンディング' (Ending) is at the top right.

38

This musical staff shows measure 38. It begins with a treble clef and a key signature of one sharp (F#). The melody consists of quarter notes: G4, A4, B4, C5, D5, E5, F#5, G5, A5, B5, C6, D6, E6, F#6, G6, A6, B6, C7. The measure number '38' is at the top left.

39

This musical staff shows measure 39. It begins with a treble clef and a key signature of one sharp (F#). The melody consists of quarter notes: G4, A4, B4, C5, D5, E5, F#5, G5, A5, B5, C6, D6, E6, F#6, G6, A6, B6, C7. The measure number '39' is at the top left. The staff ends with a double bar line and a final chord consisting of G4, A4, B4, C5, D5, E5, F#5, G5.